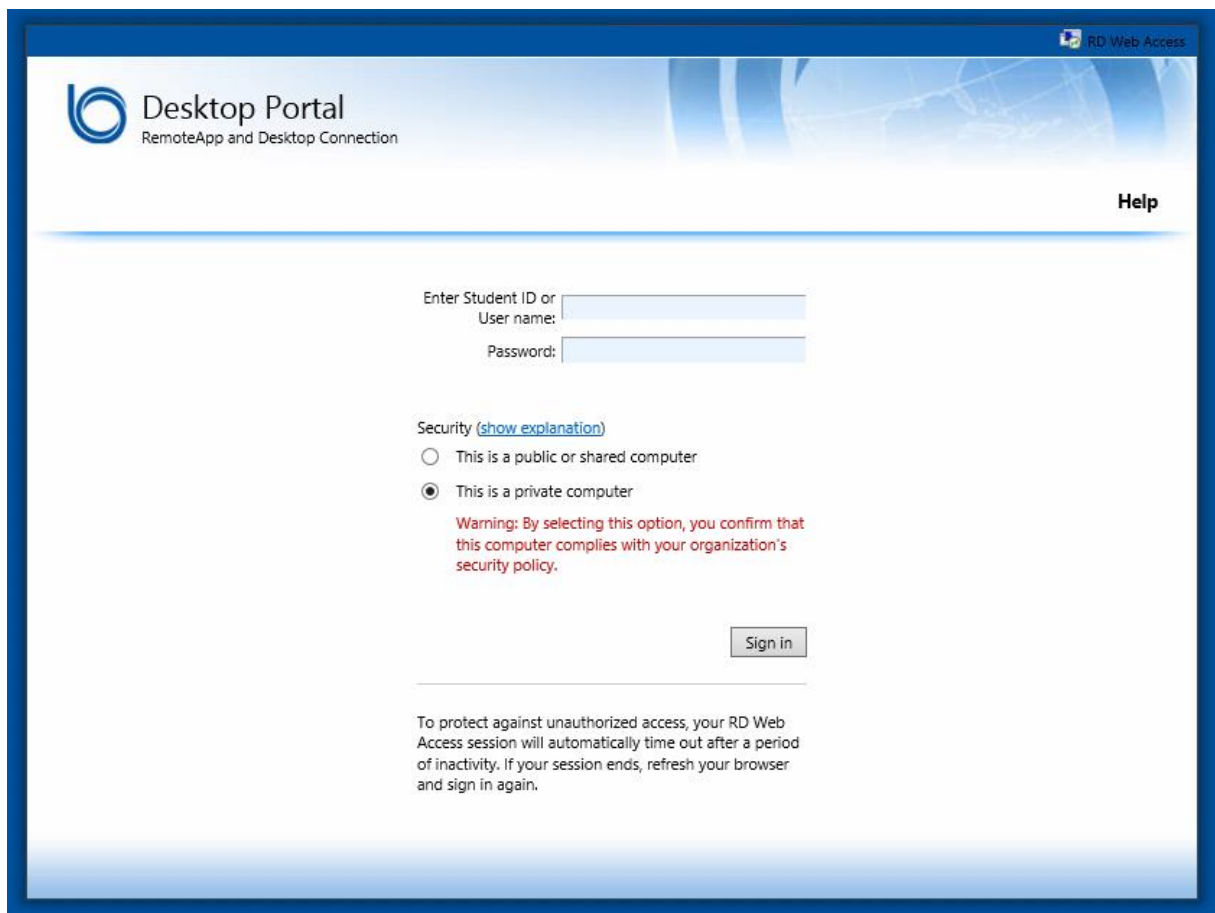


# Remote Desktop Portal

## Step-by-Step Guide for Mac OS X



The screenshot shows the Remote Desktop Portal login interface. At the top left, there is a logo for 'Desktop Portal' with the subtitle 'RemoteApp and Desktop Connection'. In the top right corner, there is a small icon and the text 'RD Web Access'. Below the header, there is a 'Help' link. The main content area contains a login form with the following elements:

- Input fields for 'Enter Student ID or User name:' and 'Password:'.
- A 'Security' section with a link '(show explanation)'. It contains two radio button options:
  - This is a public or shared computer
  - This is a private computer
- A red warning message: 'Warning: By selecting this option, you confirm that this computer complies with your organization's security policy.'
- A 'Sign in' button.

At the bottom of the page, there is a disclaimer: 'To protect against unauthorized access, your RD Web Access session will automatically time out after a period of inactivity. If your session ends, refresh your browser and sign in again.'

*These instructions are for both staff and students using a  
Mac OS X Computer.*

*Please ensure your computer is fully up-to-date before  
contacting IT Services for further help.*

Open the Apple App Store on your Mac computer, search for 'Microsoft Remote Desktop' and download the application.

Click the downloaded file to install the application.



Open

## Microsoft Remote Desktop 4+

With the Microsoft Remote Desktop app, you can connect to a remote PC and your work resources from almost anywhere. Experience the power of Windows with RemoteFX in a Remote Desktop client designed to help you get your work done wherever you are.

### Getting Started

Configure your PC for remote access first. Download the RDP assistant to your PC and let it do the work for you:

<https://aka.ms/rdassistant>

Learn more about remote desktop apps here: <https://aka.ms/rdapps>

### Features

- Access to remote resources through the Remote Desktop Gateway
- Secure connection to your data and applications with breakthrough Network Layer Authentication (NLA) technology
- Simple management of all remote connections from the connection center
- High quality video and sound streaming with improved compression and bandwidth usage
- Easy connection to multiple monitors or projectors for presentations
- Print from Windows applications to any printer configured on your Mac
- Access local files on your Mac from your Windows applications
- Support for Azure RemoteApp

We're improving our app - learn more! <https://aka.ms/rdmac-preview>

### What's New in Version 8.0.36

We've fixed the following in this release:

- An issue where you got a "Connection reset by peer" error message when you connected over a Remote Desktop Gateway...

[...More](#)

<a href="#">Microsoft Corporation Web Site</a>	>
<a href="#">Microsoft Remote Desktop Support</a>	>
<a href="#">App License Agreement</a>	>
<a href="#">Privacy Policy</a>	>

### Information

Category: **Business**

Updated: **07 November 2016**

Version: **8.0.36**

Price: **Free**

Size: **14.8 MB**

Family Sharing: **Yes**

Language: **English**

Developer: **Microsoft Corporation**

© 2016 Microsoft Corporation. All rights reserved.

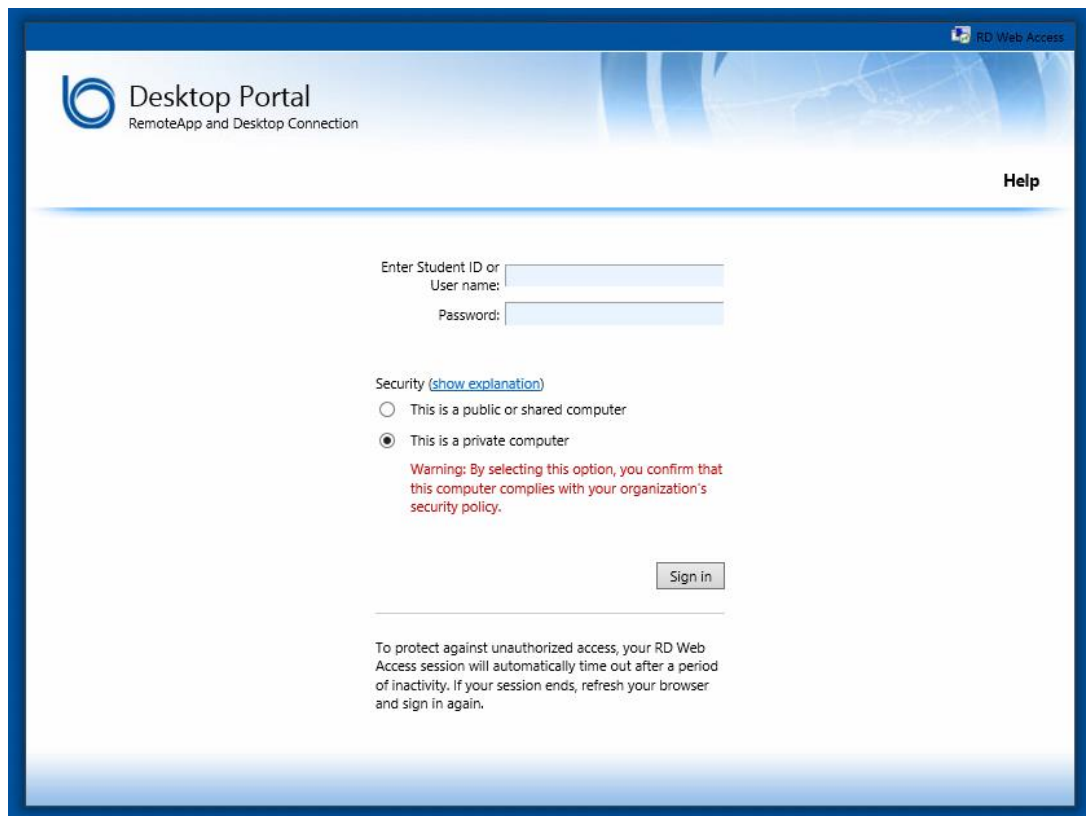
Rated **4+**

Compatibility:

**OS X 10.9 or later, 64-bit processor**

Open a web browser and type <https://desktop.burycollege.ac.uk> into the address bar and press enter.

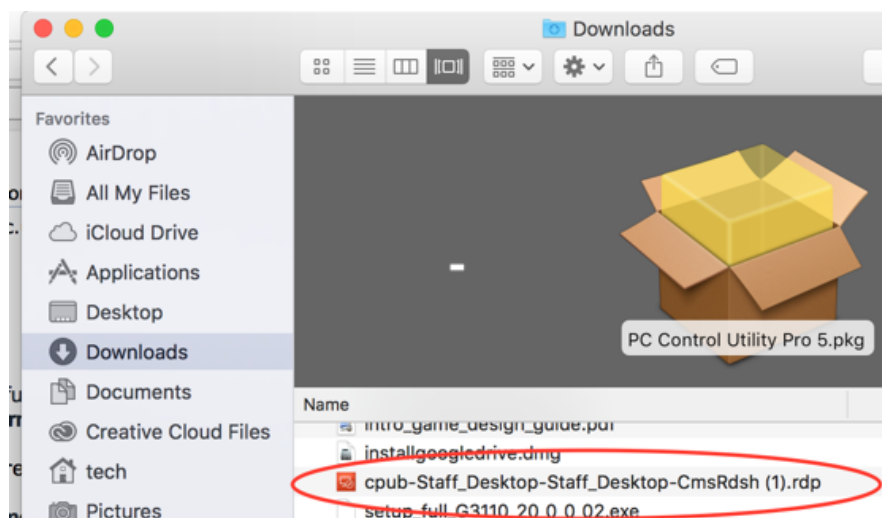
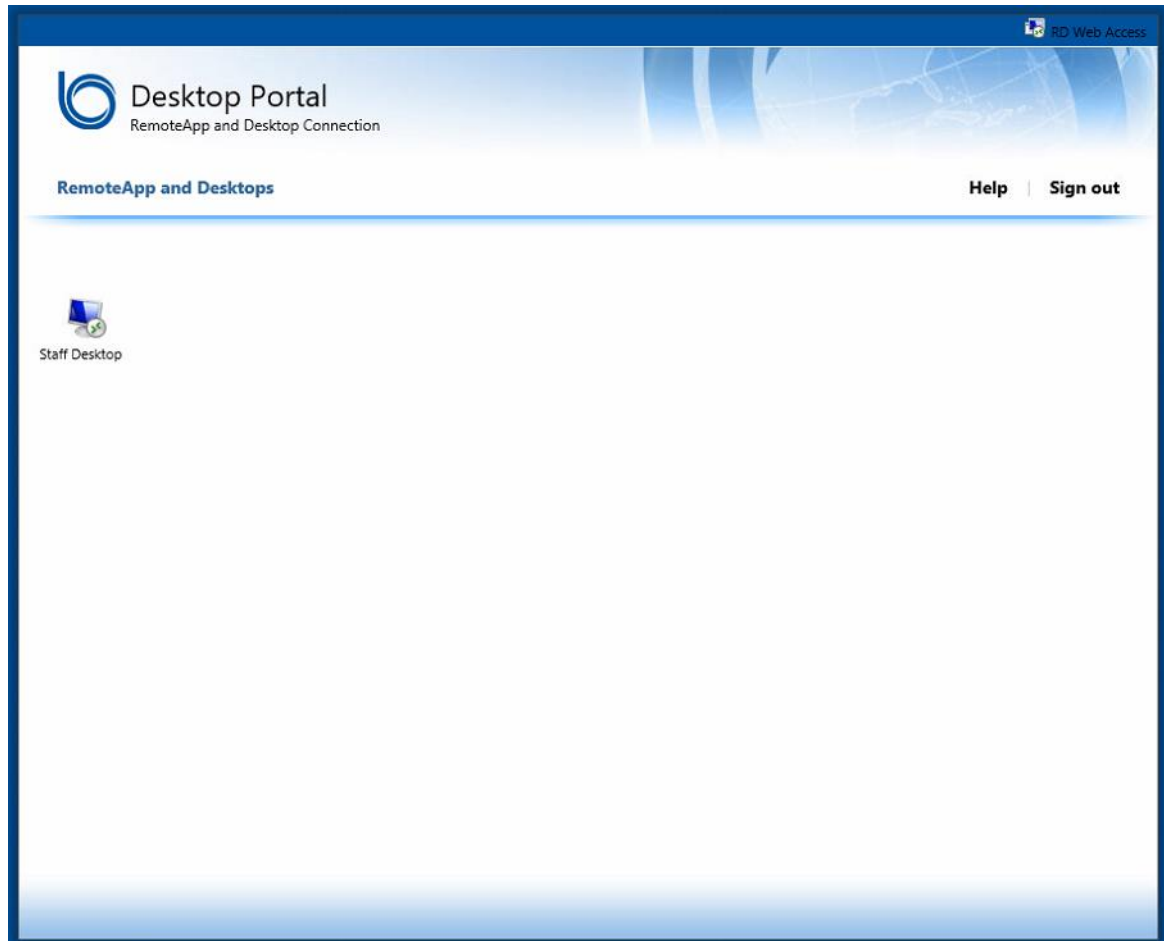
Enter your college credentials into the boxes and click 'Sign In'.



The screenshot shows a web browser window displaying the 'Desktop Portal' login page. The page has a blue header with the Bury College logo and the text 'Desktop Portal RemoteApp and Desktop Connection'. A 'Help' link is visible in the top right corner. The main content area contains a login form with two input fields: 'Enter Student ID or User name:' and 'Password:'. Below the password field, there is a 'Security' section with a link to '(show explanation)'. Two radio buttons are present: 'This is a public or shared computer' (unselected) and 'This is a private computer' (selected). A red warning message states: 'Warning: By selecting this option, you confirm that this computer complies with your organization's security policy.' A 'Sign in' button is located below the radio buttons. At the bottom of the page, a note reads: 'To protect against unauthorized access, your RD Web Access session will automatically time out after a period of inactivity. If your session ends, refresh your browser and sign in again.'

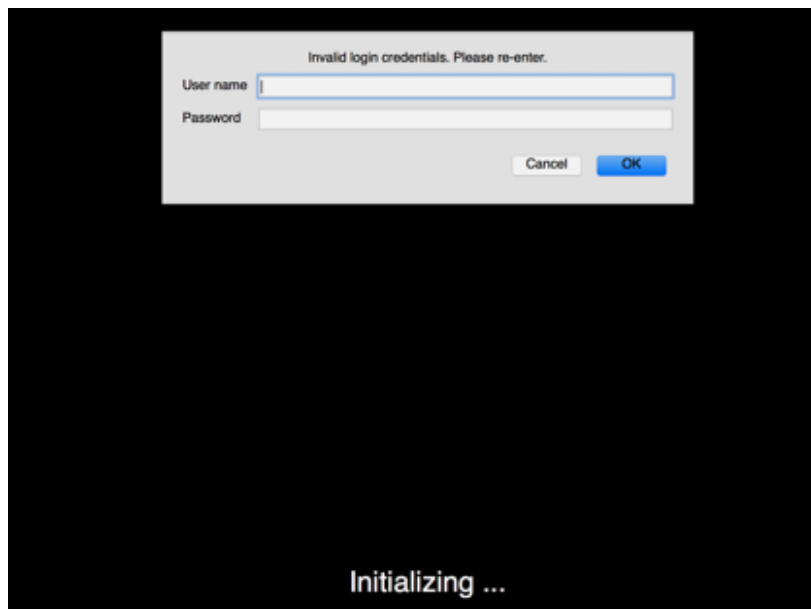
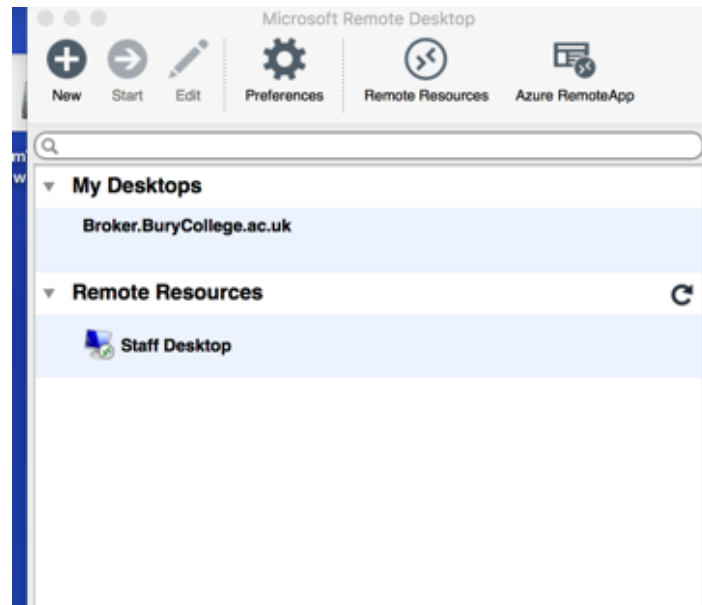
The below screen will then appear.

Click the 'Staff Desktop' or 'Student Desktop' icon which will download a file usually into your downloads folder.



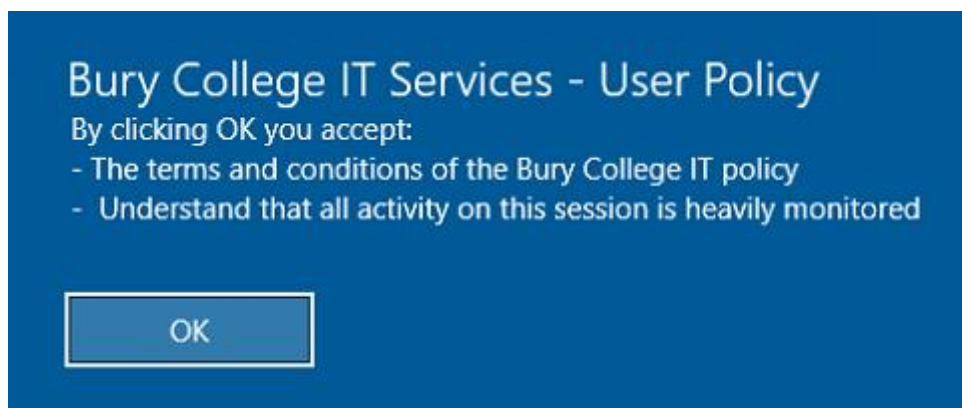
Click the downloaded file which will start the 'Microsoft Remote Desktop' application.

Click either 'Staff Desktop' or 'Student Desktop' which will then launch and show a login screen.



Enter your college credentials but type 'burycollege\  
before your username e.g. 'burycollege\joe.bloggs' or  
'burycollege\B1234567' and click 'OK'.

A loading window will then appear which will take a few  
moments to connect and then you will be asked to  
acknowledge the below notice.



Once the login process has happened, you  
will be taken to a desktop where you can now  
work remotely.